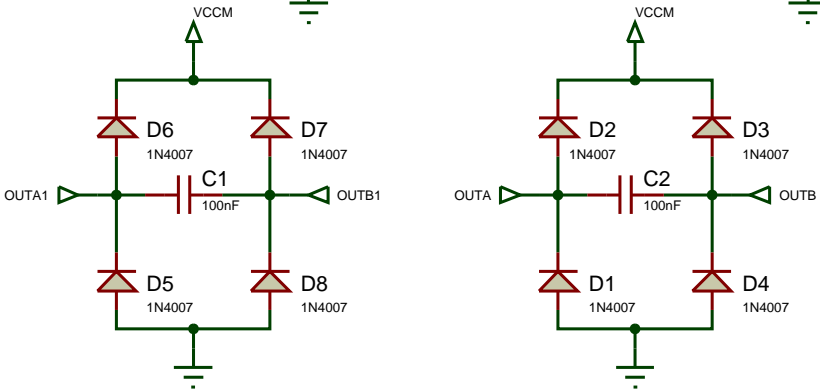
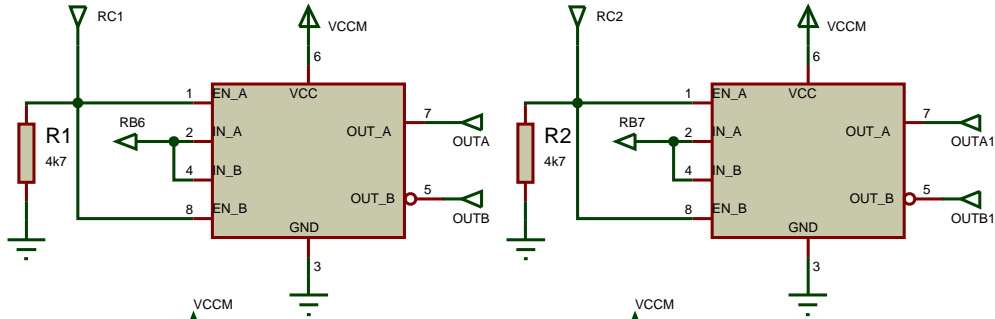
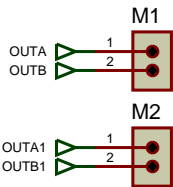


Control de motores

- Pin 6: Alimentación VCCM
- Pin 1 y 8: Habilitan RC1 y RC2
- Pin 2 y 4: Entrada RB6 y RB7
- Pin 5: Salida A
- Pin 7: Salida negada B

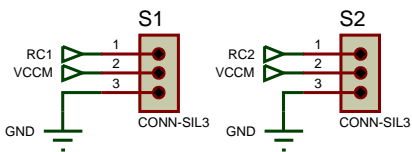


Conexión Motores

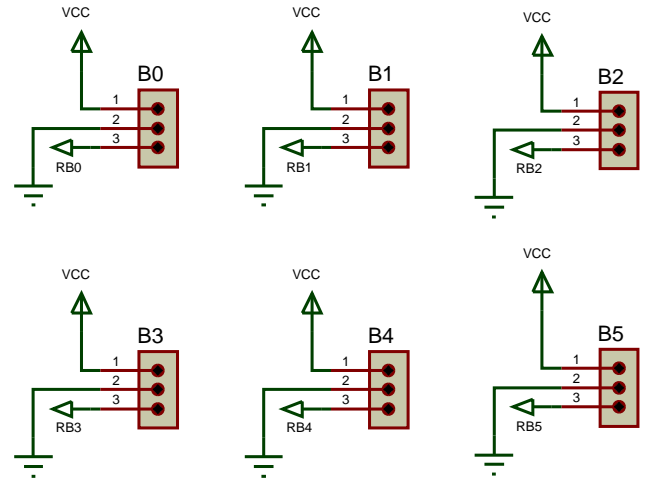


Conexión de servos

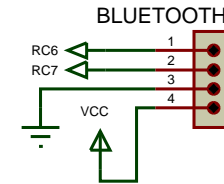
- VCCM: Alimentación
- RC1: Servo 1
- RC2: Servo 2



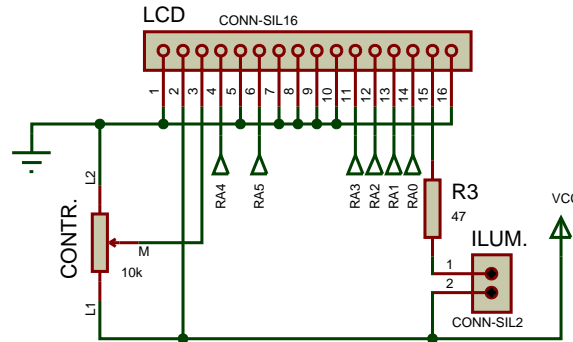
Conectores de sensores analogicos



Bluetooth



LCD



Conectores expansión

